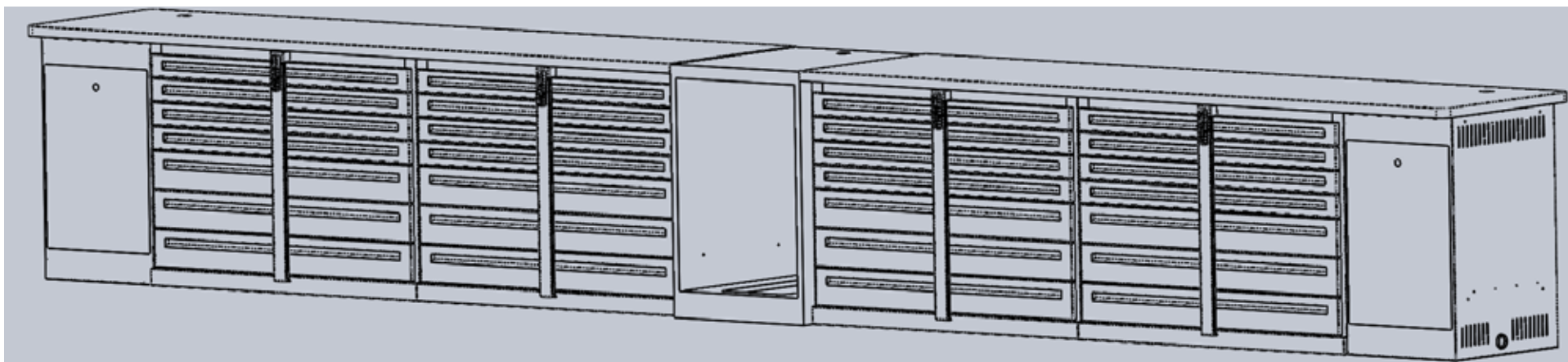


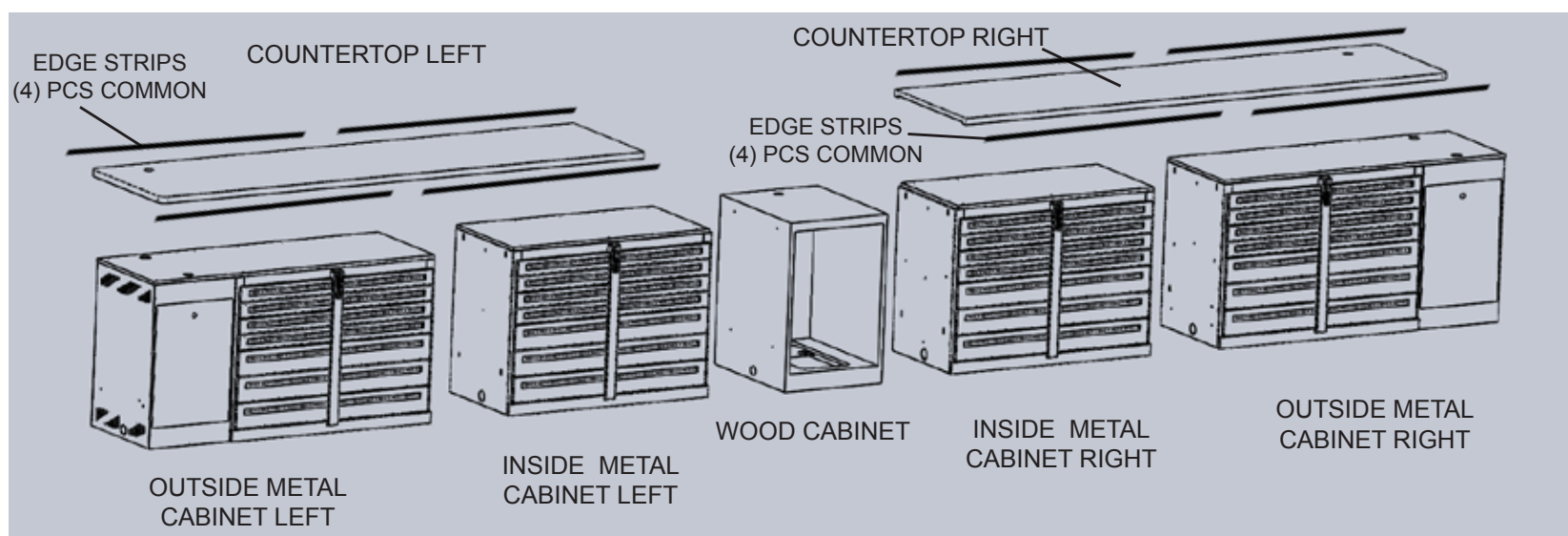
PGA

FITTING STUDIO CABINET ASSEMBLY Instruction Sheet

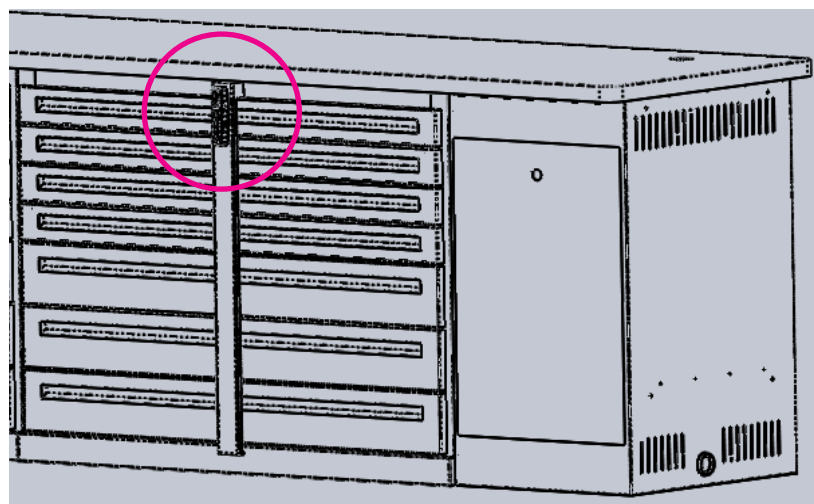
PLEASE READ AND UNDERSTAND THESE INSTRUCTIONS BEFORE
ATTEMPTING TO INSTALL THESE DISPLAYS.



Parts Included:

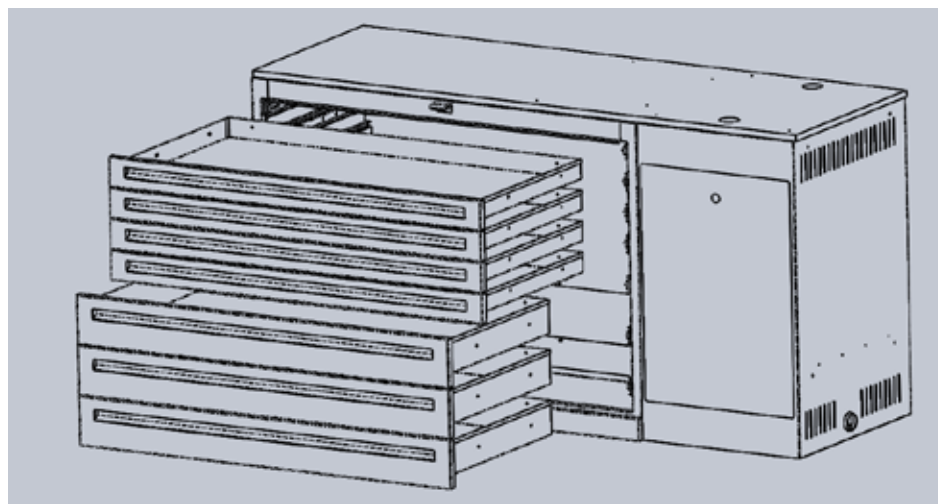


Installation:



REMOVE LOCK BARS

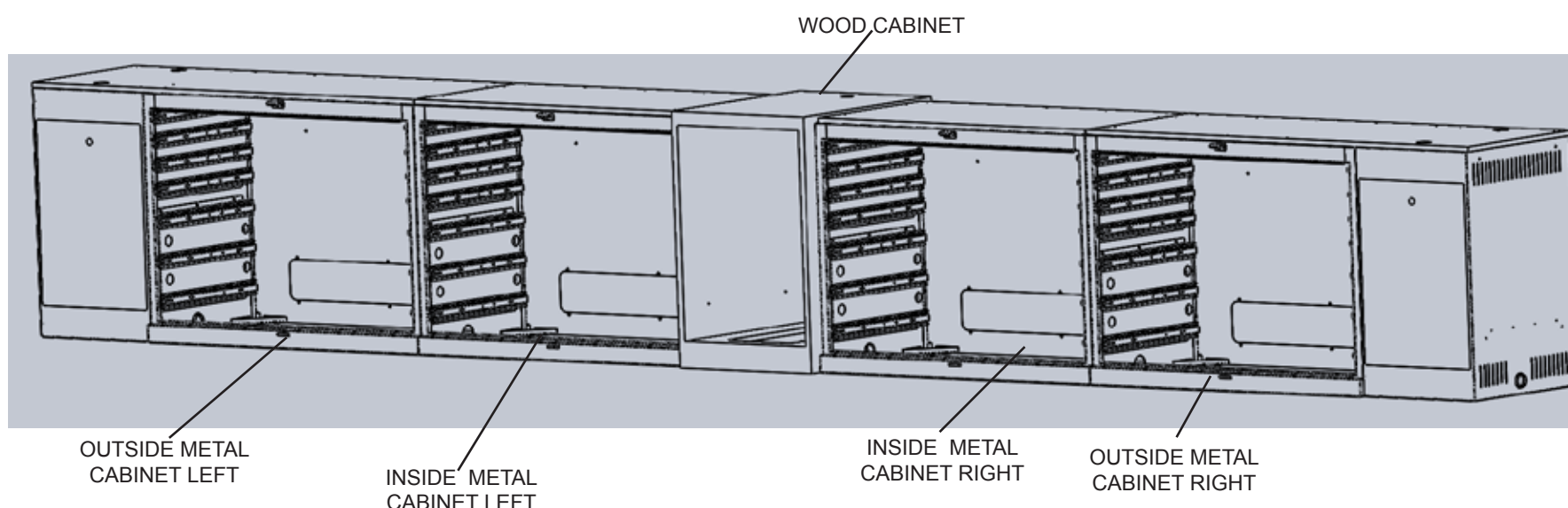
STEP 1



REMOVE DRAWERS
2 PERSONS RECOMMENDED

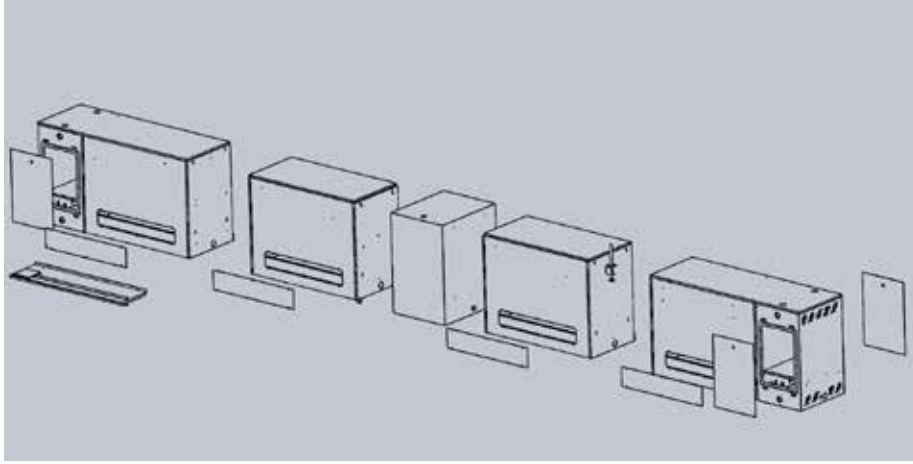
NOTE: ALL DRAWERS MUST BE REMOVED BEFORE REMOVING CABINETS FROM PALLETS.

Cabinets ship with drawers in place. To make it easier to move the cabinets into place, remove lock bars, enter code 1-2-3-4 to open lock on lock bars, and all of the drawers. Place lock bars and drawers in a safe area until reinstallation later.



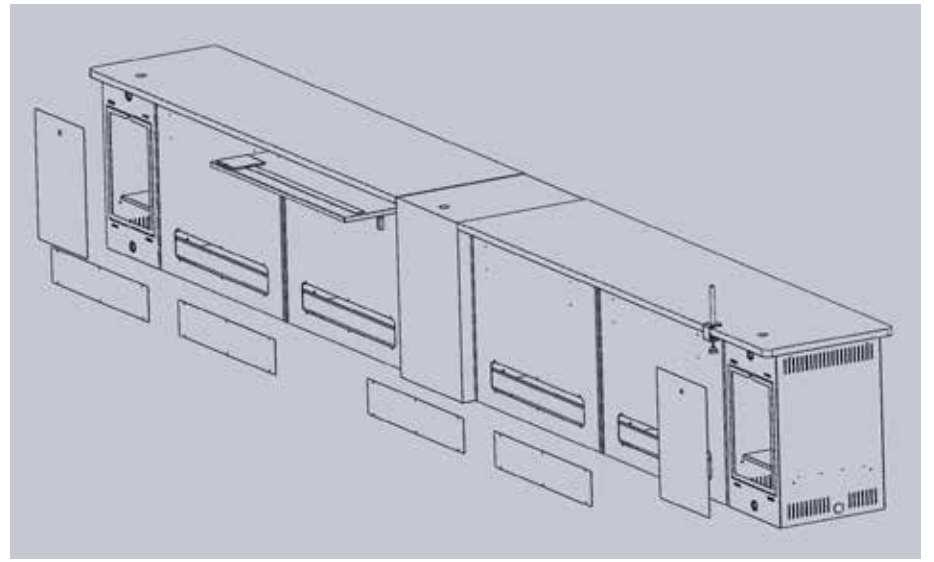
STEP 2

Once all drawers are removed, remove cabinets from pallet. Cabinets can now be moved into final install position.



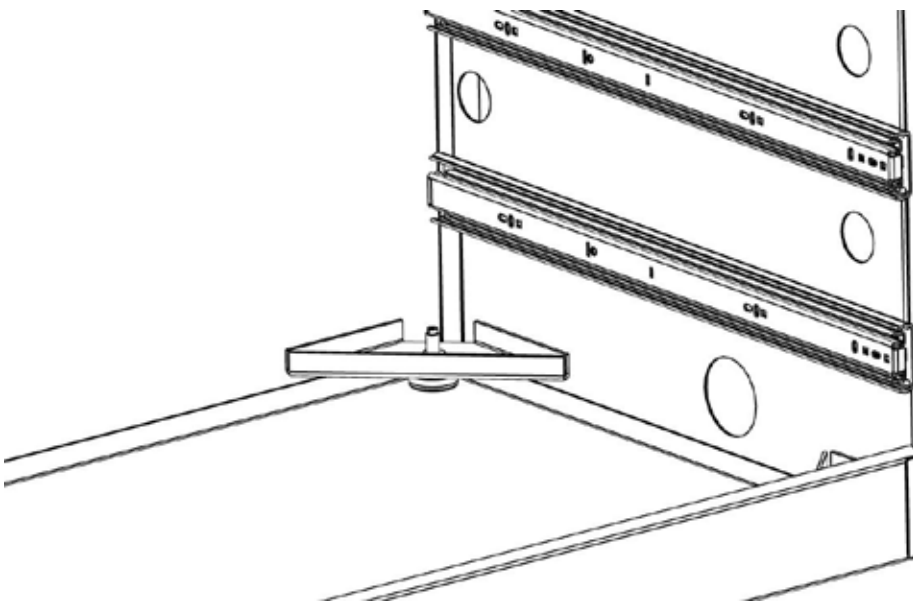
STEP 3

When all of the cabinets are in place, LOOSELY connect each cabinet using the 1/4-20 machine screws and spin lock nuts. Do not tighten at this time. Large doors and lower cover plates can be removed at this time to access cable and wire routing.



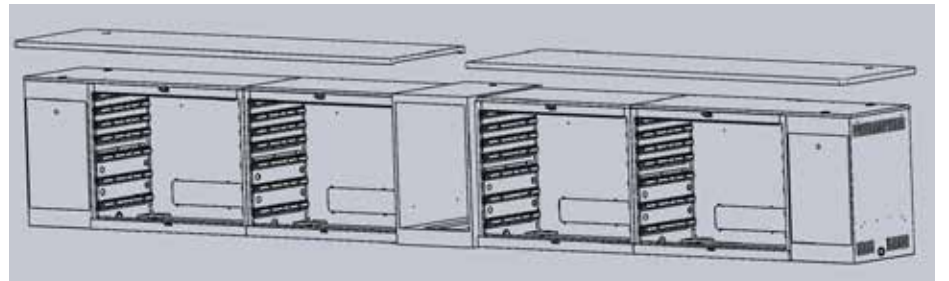
STEP 4

As each cabinet goes into place, feed all the electrical and network cables through the bottom of the cabinets.



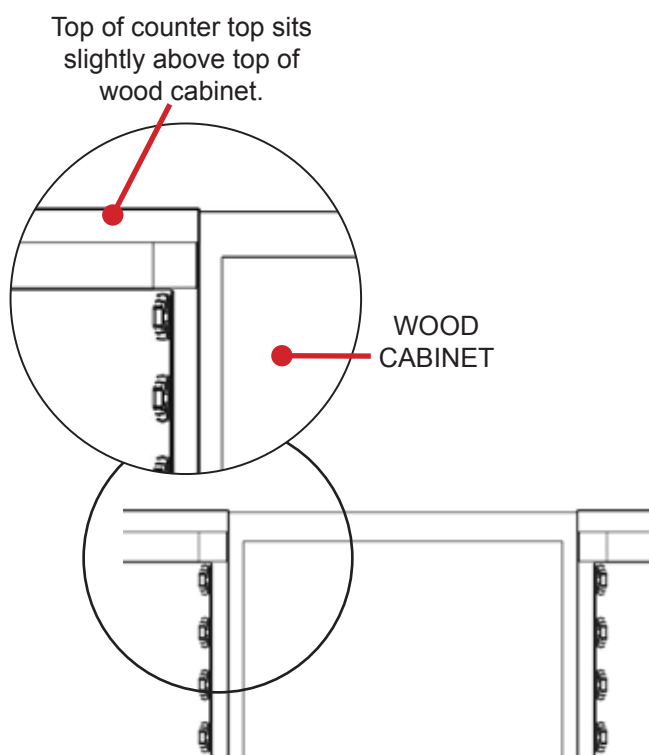
STEP 5

At this time, level all cabinets side to side, front to back, using THE FOUR LEVELERS in each unit making sure that the tops of the metal cabinets create one continuous surface for securing the counter top. DO NOT USE LEVELERS UNLESS NECESSARY.



STEP 6

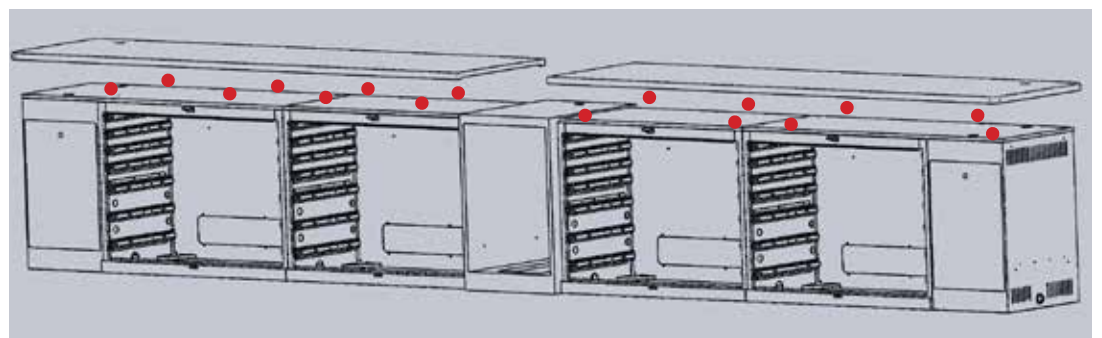
Dry fit counter top. Make sure fit to center wood cabinet is correct and top sits solid.



STEP 7

Be sure to also set the height of the counter top that it sits just proud of the wood laminate unit.

Now that all of the cabinets are level and the proper height, you can go back and securely tighten all of the connecting hardware between the cabinets from Step 3A.

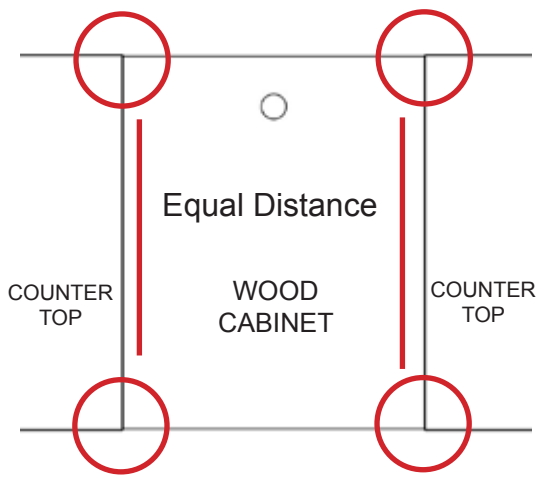


STEP 8

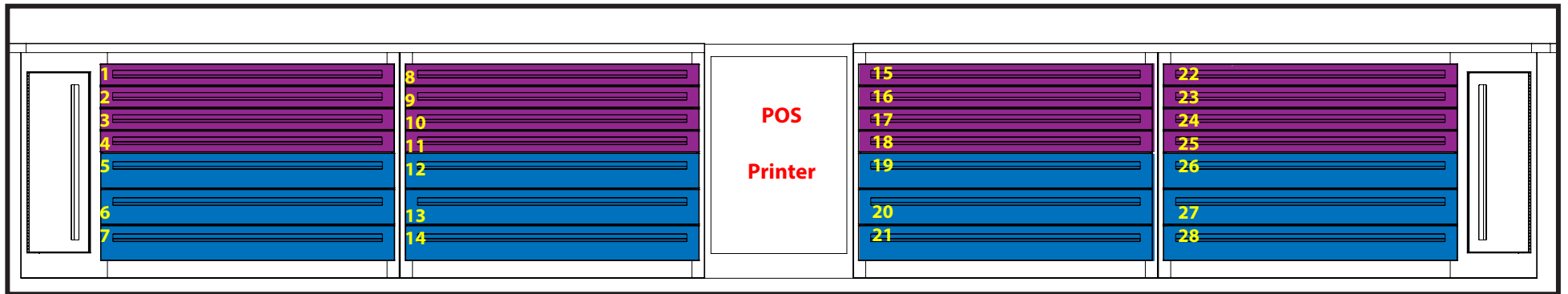
Next, remove the countertops. Apply dollops of silicone caulk roughly every 12" around the top of the cabinets.

NOTE: To hold the counter top in place while the silicone caulk sets, use a few dollops of a slow set hot glue. Reinstall the countertops to cabinets.

STEP 9



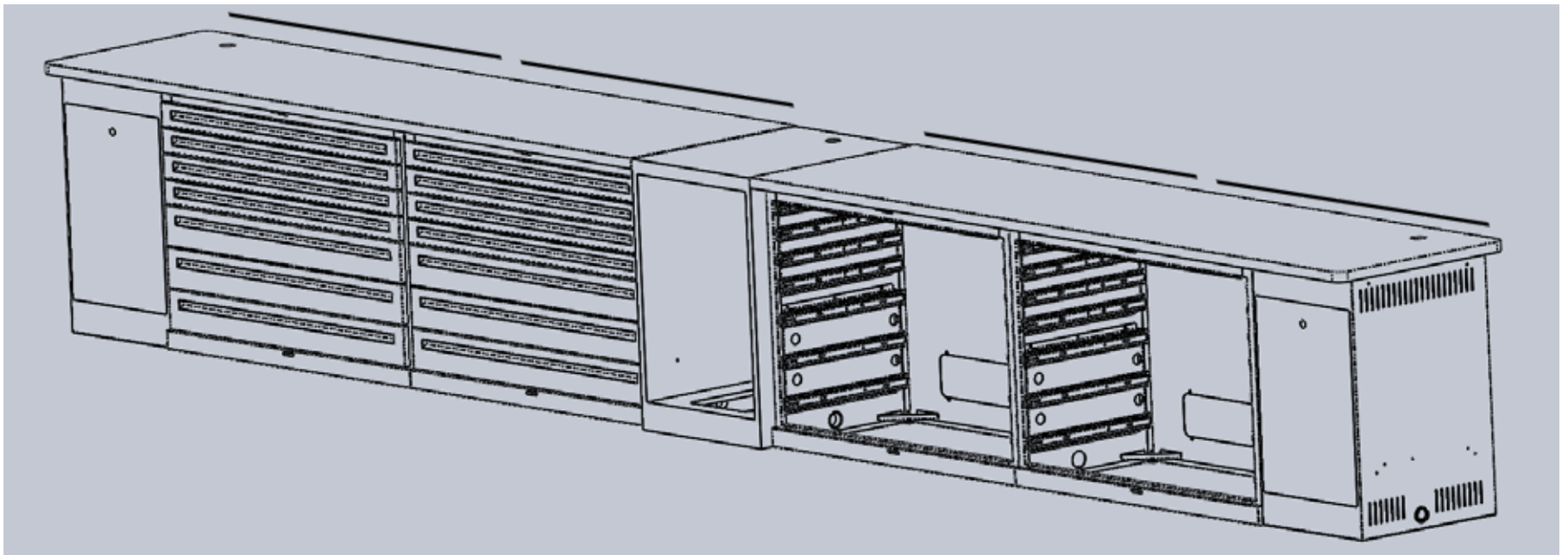
Place the counter top and massage it down into place so it centers to the laminate cabinet with equal over hang front and back.



STEP 10

See attached supplemental directions for correct placement for drawers when reinstalling.

NOTE: All drawers are labeled with a number on the inside left front corner. Numbers correspond with the above placements.

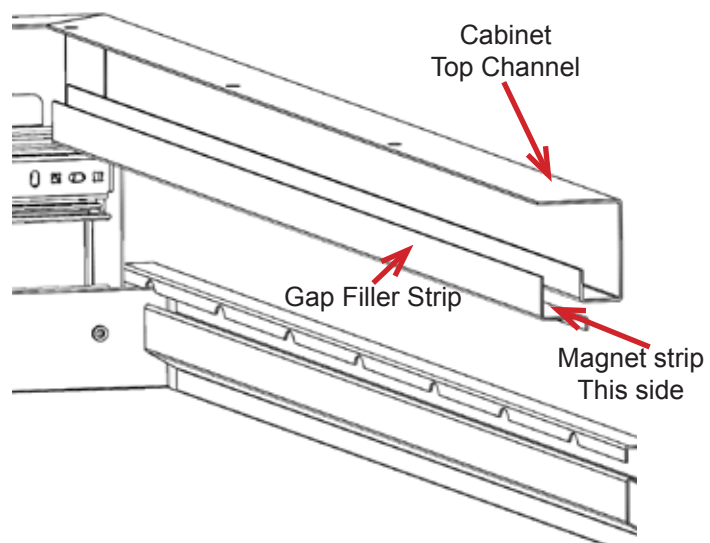
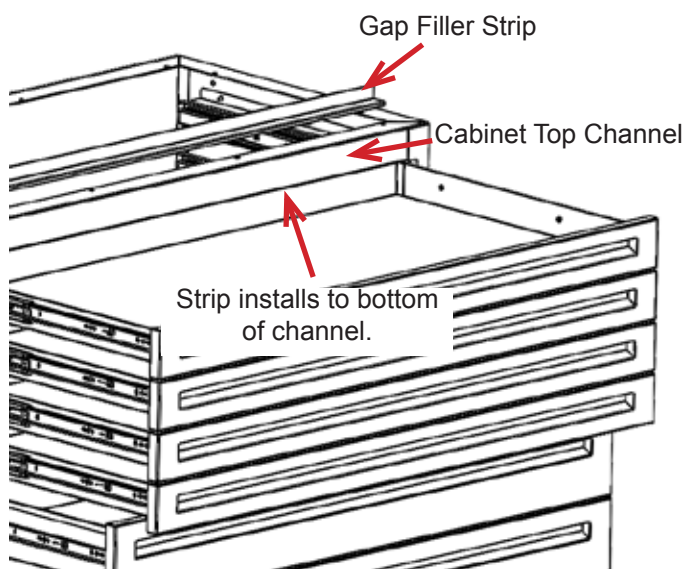


STEP 11

Drawers may now be put back into cabinets. Two people work best. Refer to setup in planogram for correct drawer placement.

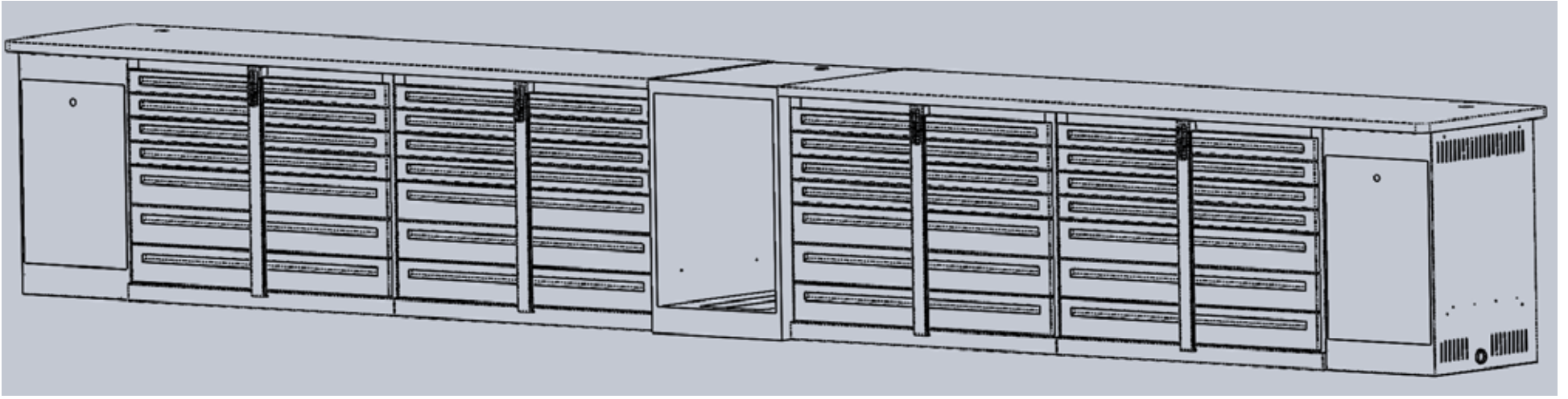
PLEASE SEE SUPPLEMENTAL DRAWER INSTALLATION INSTRUCTIONS BEFORE INSTALLING DRAWERS.

Use caution when installing drawers. Make sure drawer rails line up with carriers and bearing. **DO NOT FORCE! DAMAGE MAY OCCUR.** If drawer resists pushing in, remove and realign. All doors and covers previously removed can be replaced. At this time the countertop edge strips (8 total) can be pressed onto both sides of the countertop edges.



STEP 12-13

Install the Gap Filler "Z" strip on the top of the opening for the top drawer on each cabinet.



Completely Display

AS A LAST STEP, PLEASE MAKE SURE ALL DRAWERS FUNCTION SMOOTHLY IN AND OUT.